

5.1

3DiscClinic

3DiscClinic

5.1 Update

365 Herndon Pkwy #18
Herndon, VA 20170,
USA

1 place de la Pyramide
92 800 Puteaux
France

info@3disc.com
www.3DISC.com

3DISC

So Fast: Speed Your Clinic Can Feel

We're excited to announce the release of 3DiscClinic 5.1. that elevates your experience to another level in speed, fluidity and accuracy. This latest version delivers significant improvements in scanning performance, offering even faster, smoother, and more precise scans than ever before. The release also features a streamlined, modernized interface, designed in alignment with the new OVO3 platform for a more intuitive and efficient user experience.

Developed in close collaboration with our global network of reference dentists, 3DiscClinic 5.1 reflects real-world clinical feedback while enhancing workflows, improving usability, and providing tighter system integration to support seamless daily practice. **This update will be rolled out progressively until November 5th, 2025.**

In conjunction with this release, 3DISC is also launching a new onboarding program to guide and train new users throughout their digital journey. This comprehensive program is delivered by our dedicated clinical and IT expert teams and is available to all new 3DISC users worldwide.

Improved Clinical Workflows

Pre-OP Workflow

When undertaking a Pre-OP workflow, the order of the steps has changed. This has been developed in cooperation with clinicians to enable an experience and to facilitate the acquisition of the bite with the Pre-OP scan data.

ScanBody Workflow

The ScanBody workflow has been modified to facilitate faster scanning of scanbodies and account for post-operative conditions. This has been developed in cooperation with clinicians to enable better results. In this new workflow, the scanbody is scanned first and then the soft tissue (emergence profile) can be scanned afterwards. This has proved very successful particularly, in cases directly after implant placement.

Pre-OP Workflow

3DiscClinic 5.1 introduces a new Pre-Op workflow.

Pre-OP step-by-step guided scanning sequence now includes:

- Scan Upper Pre-OP
- Scan Lower Pre-OP
- Capture bite scans on both sides to ensure the lab receives accurate vertical dimensions (VD)= based on the prosthesis

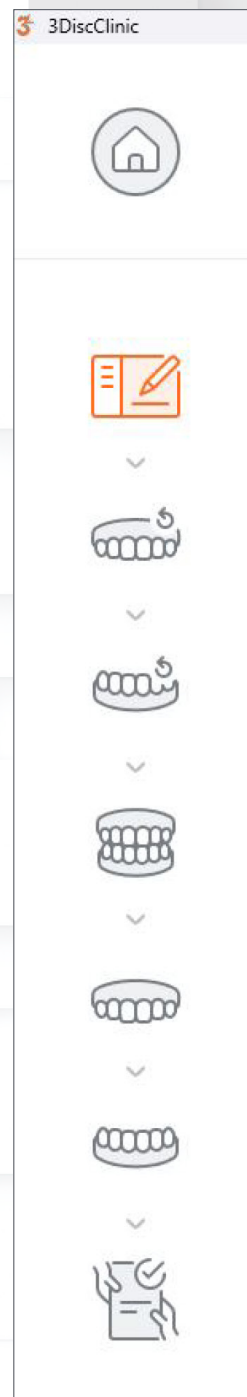
After bite scans:

- Remove prosthesis from both arches
- System will automatically reset to allow scanning from scratch
- Scan Upper Final
- Scan Lower Final

Upon finalization:

Final scans will automatically align and match with Pre-OP scans, ensuring consistency and precision.

Send to Lab.



ScanBody Workflow

3DiscClinic 5.1 introduces a new ScanBody workflow.

ScanBody step-by-step guided scanning sequence now includes:

- Scan Upper ScanBody
- Trim Upper ScanBody and scan the Emergence Profile
- Scan Lower ScanBody
- Trim Lower ScanBody and scan the Emergence Profile
- Scan both sides of the bite, if possible.

Finalize & send to Lab.



Changes & Improvements in the User Interface

Tools now available directly in 3D-mesh window

All review tools, including the cross-section tool, margin line tool, and others, are now directly accessible within the 3D Review window, eliminating the need to resize or switch views. This streamlines the review process, saving valuable time, and improving precision during treatment planning. If you haven't used these tools, now the ideal opportunity!

Update Settings (NVIDIA Drivers, Implant Libraries)

NVIDIA drivers and implant libraries can now be checked and updated directly within 3DiscClinic Settings, ensuring your system stays current with the latest optimizations and compatibility updates. Keeping hardware drivers up to date enhances software stability, speeds up performance, and ensures accurate implant selection for predictable outcomes.

This is more important especially after windows updates.

You can now choose when to update your implant library from the settings independently of the software updates.

Added: Norris Medical Implants have been integrated into the library.

Please contact 3DISC if you need additional libraries added!

3DiscClinic has been adapted to support the latest computers on the market while maintaining compatibility with existing platforms.

An updated list of compatible computers are available under the partner page:

<https://3disc.com/partner-site/>

Simplified Scan&Tell Launch

Initiating Patient Communication through Scan&Tell has been made even simpler, with quicker access and a more intuitive launch process. This enhances patient understanding and engagement, allowing for clearer visualization of treatment plans and more confident treatment acceptance.

Scan&Tell offers the simplified patient communication and supports preventative dentistry as well as increasing patient acceptance (read more [here](#)).

Case Set Up & Order Form

The order form has been redesigned for greater clarity and ease of use, reducing the number of steps needed to complete case setup, minimizing administrative workload, reducing errors in lab communication, and allowing clinicians to focus more on patient care.

Keep track of your cases on the mobile friendly interface from any browser!

Simplified Data Export

Introduction of a simplified data export as well as a dedicated lab export format. This includes dual export of PLY & STL files as well as dedicated export formats.

Addition of Visual Information

Additional visual guidance has been incorporated throughout the interface, including step-by-step scanning guides and improved visual cues, providing clinicians with clearer direction during each step of the workflow, reducing the learning curve and helping ensure high-quality, accurate scans every time.



Scan the code to
check out the visual
guidance videos!

General Information:

- 3DiscClinic 5.1 consolidates different improvements and is now a common platform for all 3Disc users including OVO and OVO3.
- An updated version of the Scan&Tell app is available on the Google Store. If you have Scan&Tell installed on an android table, please check the Google Store.